

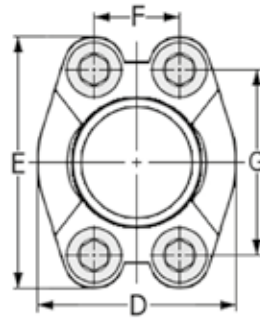
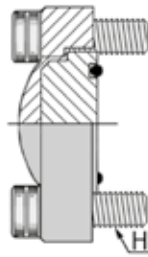
# BRIDES & COLLETS

## BRIDES D'OBTURATION EN 2 PARTIES

### SAE 6000



#### DONNÉES TECHNIQUES



| Référence  | DN    | D     | E   | F     | G     | H       |
|------------|-------|-------|-----|-------|-------|---------|
| ABCAGOB608 | 1/2"  | 47.2  | 56  | 18.24 | 40.49 | M 08X30 |
| ABCAGOB612 | 3/4"  | 60.0  | 71  | 23.80 | 50.80 | M 10X35 |
| ABCAGOB616 | 1"    | 69.6  | 81  | 27.76 | 57.15 | M 12X45 |
| ABCAGOB620 | 1"1/4 | 77.2  | 95  | 31.75 | 66.78 | M 14X50 |
| ABCAGOB624 | 1"1/2 | 95.0  | 113 | 36.50 | 79.38 | M 16X55 |
| ABCAGOB632 | 2"    | 113.8 | 133 | 44.45 | 96.82 | M 20X70 |

#### PRODUITS SIMILAIRES

Dans cette famille existe également les brides en SAE 3000.

[www.isoflex.fr](http://www.isoflex.fr)

Tel : +33(0)2 41 39 98 98 - [contact@isoflex.fr](mailto:contact@isoflex.fr)

ANGERS (49) - LOUDEAC (22) - NANTES (44) - CAEN (14) - AVIGNON (84) - ORLÉANS (45)